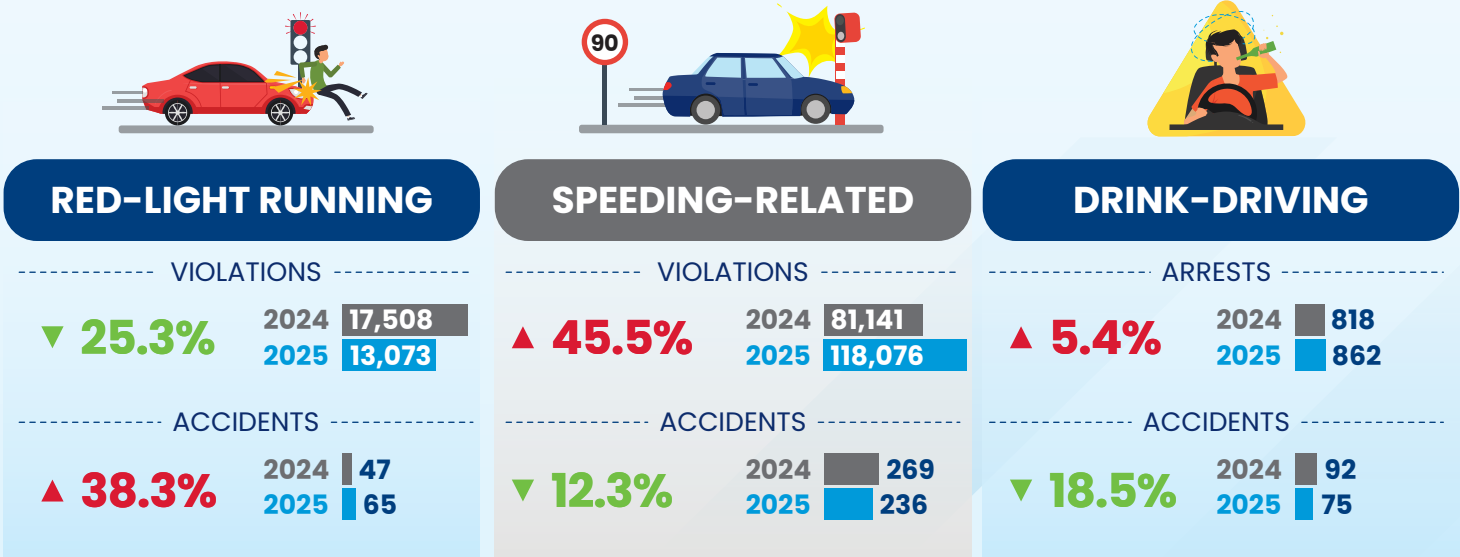
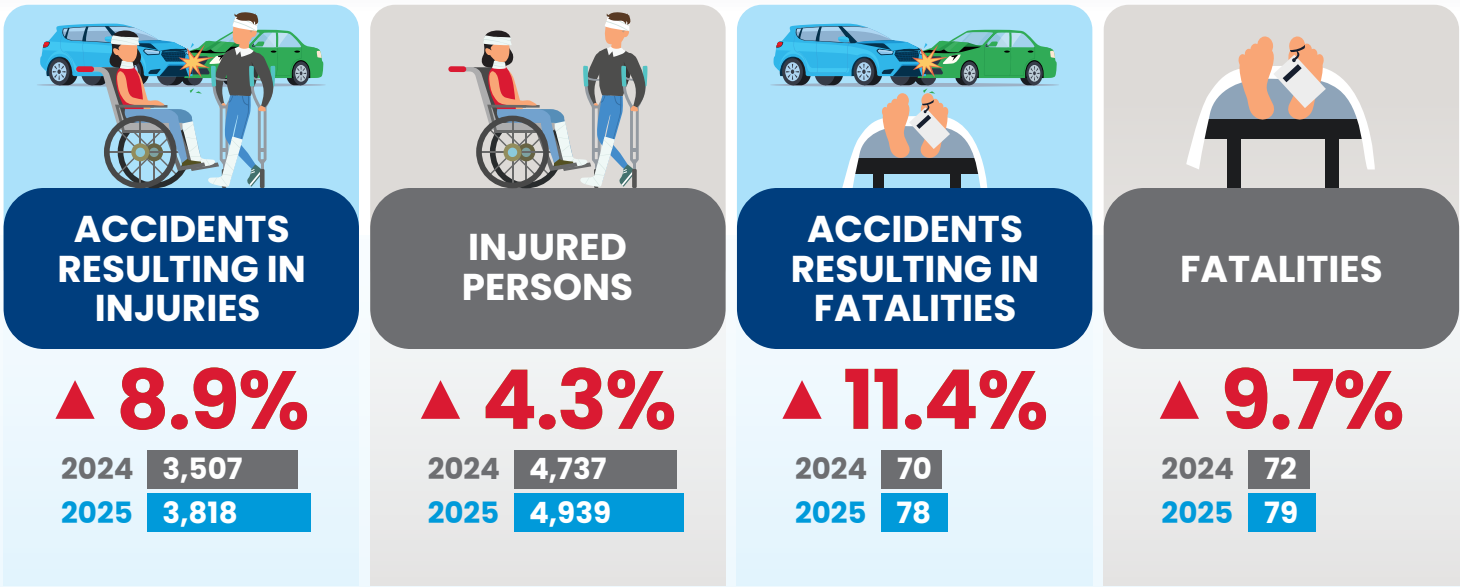


# MID-YEAR ROAD TRAFFIC SITUATION 2025

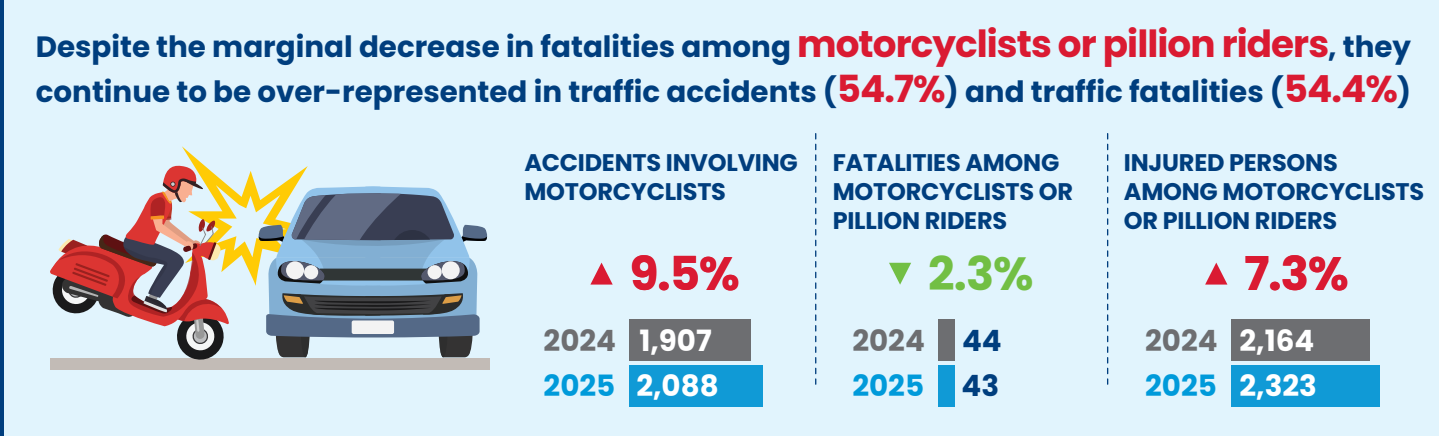
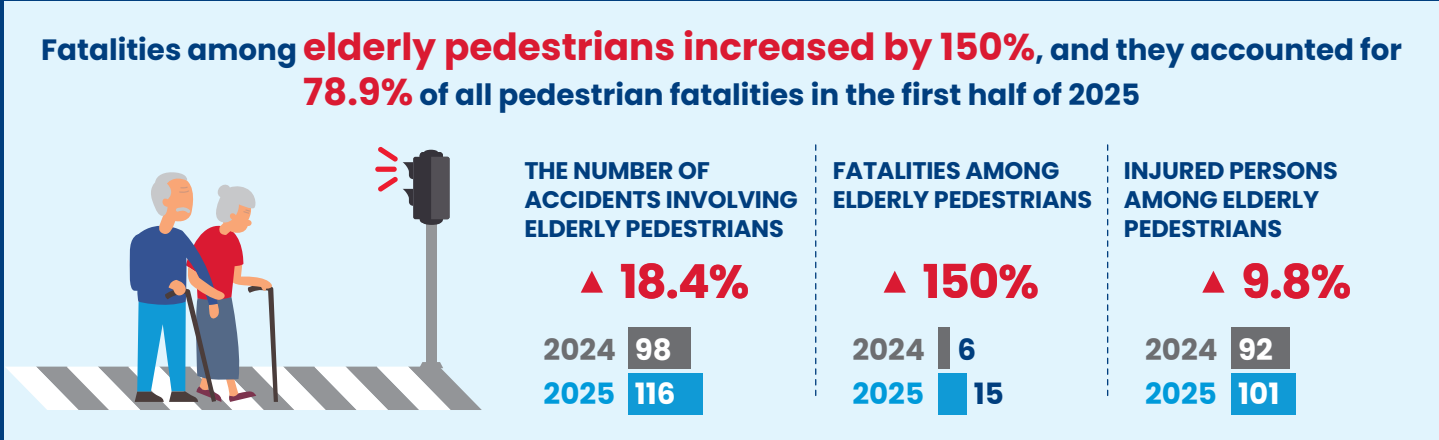


SPEEDING VIOLATIONS CONTINUE TO SEE A SIGNIFICANT RISE IN THE FIRST HALF OF 2025, COMPARED TO 2024, DUE TO THE INCREASE IN ENFORCEMENT OPERATIONS



## ELDERLY PEDESTRIANS AND MOTORCYCLISTS REMAIN VULNERABLE

They account for a disproportionate number of traffic accidents and fatalities.



SINGAPORE POLICE FORCE  
SAFEGUARDING EVERY DAY

