

# **TRAFFIC ANNUAL 2022**

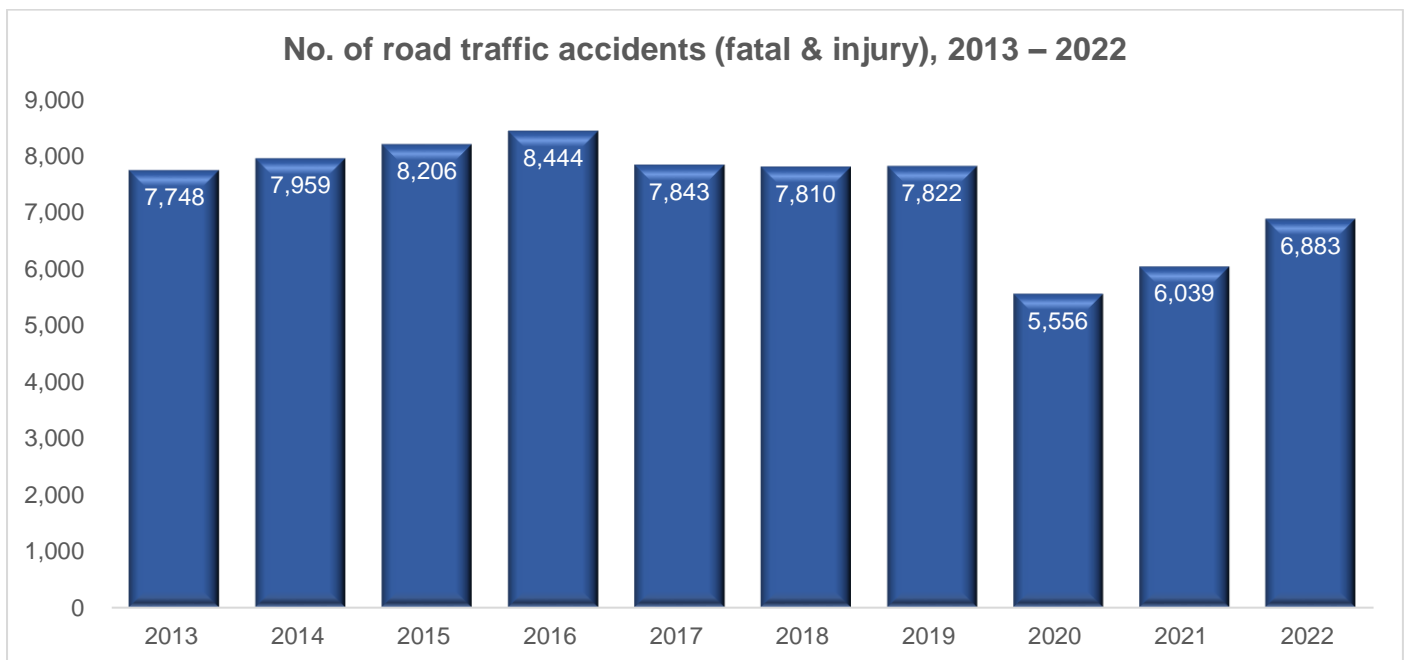
## **STATISTICAL DATA ON ROAD TRAFFIC ACCIDENTS, CASUALTIES AND VEHICLES IN SINGAPORE**

## Contents

Table 1A: No. of road traffic accidents (fatal and injury) by month, 2013 – 2022.....	3
Table 1B: No. of road traffic accidents (fatal) by month, 2013 – 2022.....	4
Table 1C: No. of road traffic accidents (injury) by month, 2013 – 2022.....	5
Table 2: Road traffic accident casualty rates, 2013 – 2022.....	6
Table 3A: No. of road traffic accident casualties (fatal & injured) by month, 2013 – 2022.....	7
Table 3B: No. of road accident casualties (fatal) by month, 2013 – 2022.....	8
Table 3C: No. of road accident casualties (injured) by month, 2013 – 2022.....	9
Table 4A: No. of road traffic accident casualties (fatal & injured) by road user group, 2013 - 2022.....	10
Table 9A: Vehicles involved in road traffic accidents (fatal & injury) by type, 2013 – 2022.....	12
Table 9B: Vehicles involved in road traffic accidents (fatal) by type, 2013 – 2022.....	12
Table 9C: Vehicles involved in road traffic accidents (injury) by type, 2013 – 2022.....	12
Table 10: Causes of accidents by severity of injury sustained, 2013 – 2022.....	13
Table 11: Qualified driving licence holders by class of licence, 2013 – 2022.....	14
Table 12: Total number of persons holding qualified driving licence, 2013 – 2022.....	14

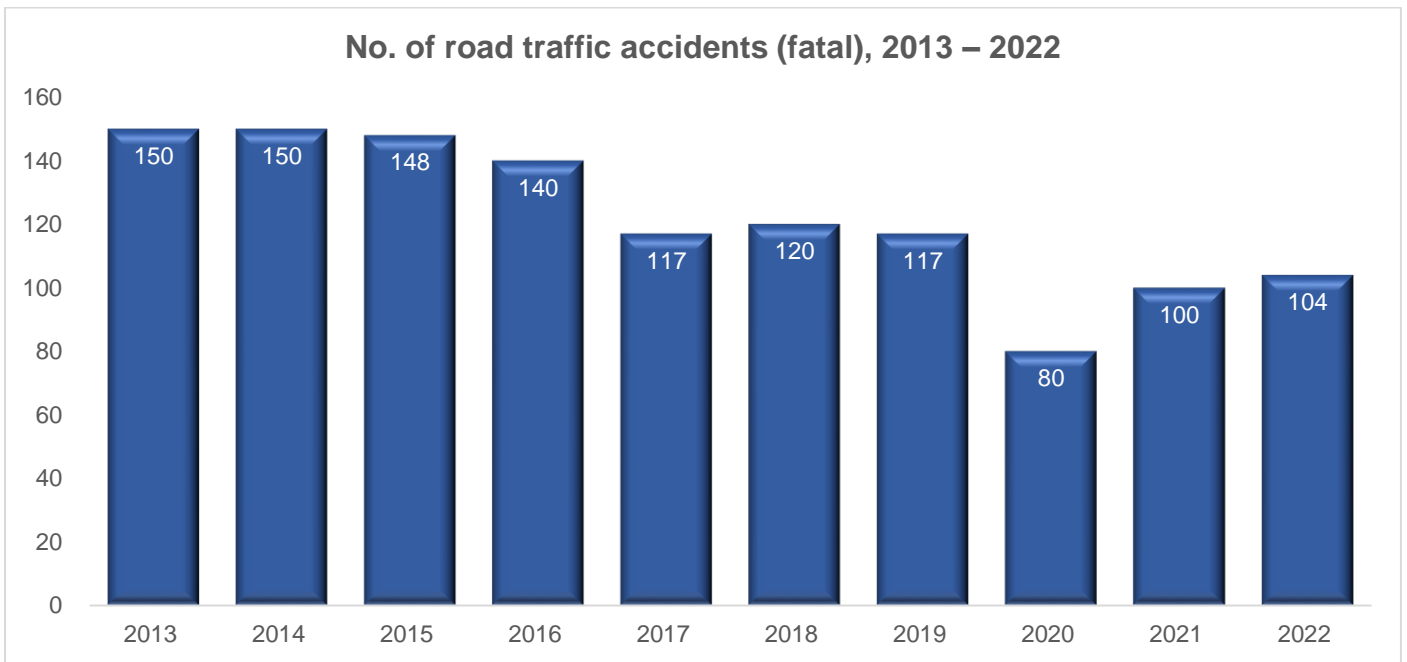
**Table 1A: No. of road traffic accidents (fatal & injury) by month, 2013 – 2022**

Year	Total	Jan	Feb	Mar	Apr	May	Jun	Jul	Aug	Sep	Oct	Nov	Dec
2013	7,748	691	612	640	665	642	597	639	656	649	673	645	639
2014	7,959	676	558	604	639	684	657	704	768	667	675	676	651
2015	8,206	638	648	770	645	687	646	714	694	626	686	712	740
2016	8,444	703	697	666	684	695	655	746	794	668	740	753	643
2017	7,843	689	592	676	674	641	636	686	663	629	619	686	652
2018	7,810	713	618	668	648	614	654	626	667	618	642	710	632
2019	7,822	677	581	624	635	660	655	687	622	659	692	676	654
2020	5,556	647	489	520	296	262	365	479	437	476	512	485	588
2021	6,039	556	475	540	499	470	472	474	534	533	440	521	525
2022	6,883	582	430	501	547	565	544	625	606	582	607	635	659



**Table 1B: No. of road traffic accidents (fatal) by month, 2013 – 2022**

Year	Total	Jan	Feb	Mar	Apr	May	Jun	Jul	Aug	Sep	Oct	Nov	Dec
2013	150	16	19	12	10	13	16	11	9	7	9	16	12
2014	150	15	17	11	13	18	11	12	9	16	11	7	10
2015	148	12	14	12	15	7	15	11	12	12	13	14	11
2016	140	13	8	10	13	11	11	16	12	8	14	11	13
2017	117	8	11	8	10	13	9	7	16	10	3	14	8
2018	120	10	12	6	10	9	10	11	9	9	12	8	14
2019	117	8	9	13	12	6	11	9	4	10	9	15	11
2020	80	11	9	10	10	2	7	3	9	4	5	6	4
2021	100	7	8	14	5	12	6	8	6	6	6	10	12
2022	104	4	5	11	13	5	6	10	8	13	14	3	12



**Table 1C: No. of road traffic accidents (injury) by month, 2013 – 2022**

Year	Total	Jan	Feb	Mar	Apr	May	Jun	Jul	Aug	Sep	Oct	Nov	Dec
2013	7,598	675	593	628	655	629	581	628	647	642	664	629	627
2014	7,809	661	541	593	626	666	646	692	759	651	664	669	641
2015	8,058	626	634	758	630	680	631	703	682	614	673	698	729
2016	8,304	690	689	656	671	684	644	730	782	660	726	742	630
2017	7,726	681	581	668	664	628	627	679	647	619	616	672	644
2018	7,690	703	606	662	638	605	644	615	658	609	630	702	618
2019	7,705	669	572	611	623	654	644	678	618	649	683	661	643
2020	5,476	636	480	510	286	260	358	476	428	472	507	479	584
2021	5,939	549	467	526	494	458	466	466	528	527	434	511	513
2022	6,779	578	425	490	534	560	538	615	598	569	593	632	647

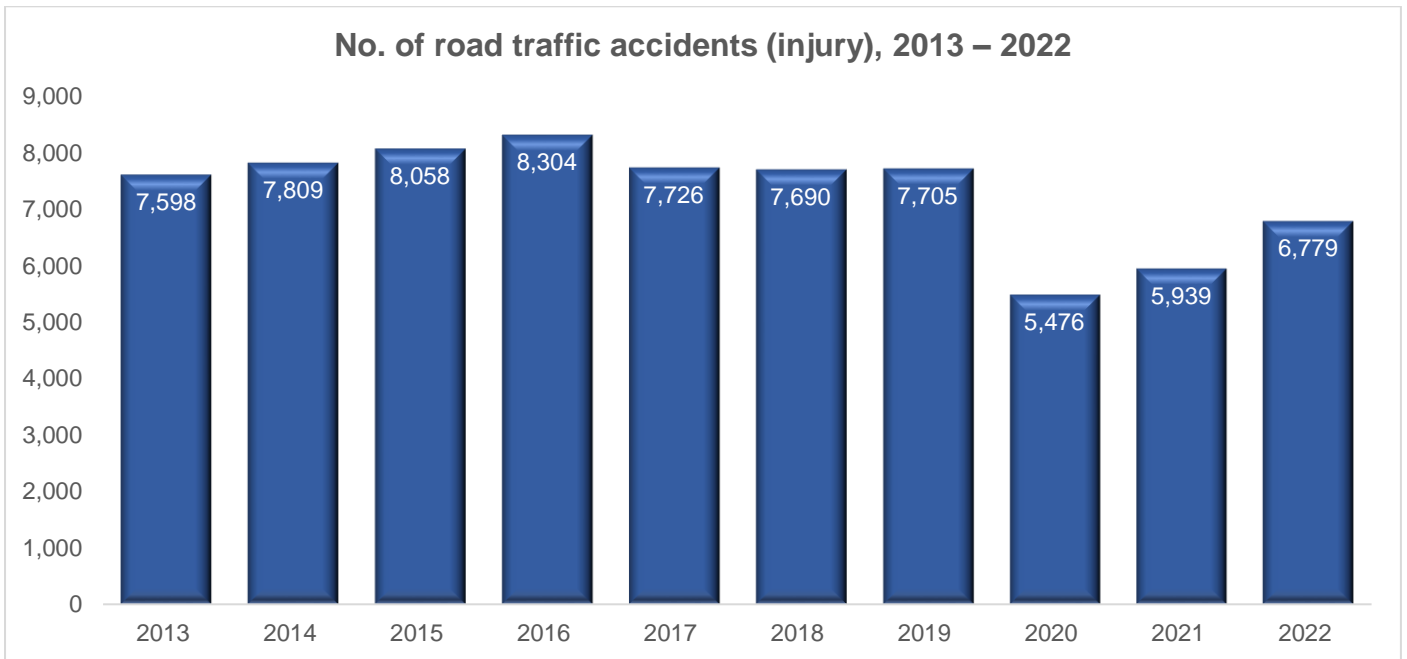


Table 2: Road traffic accident casualty rates, 2013 – 2022

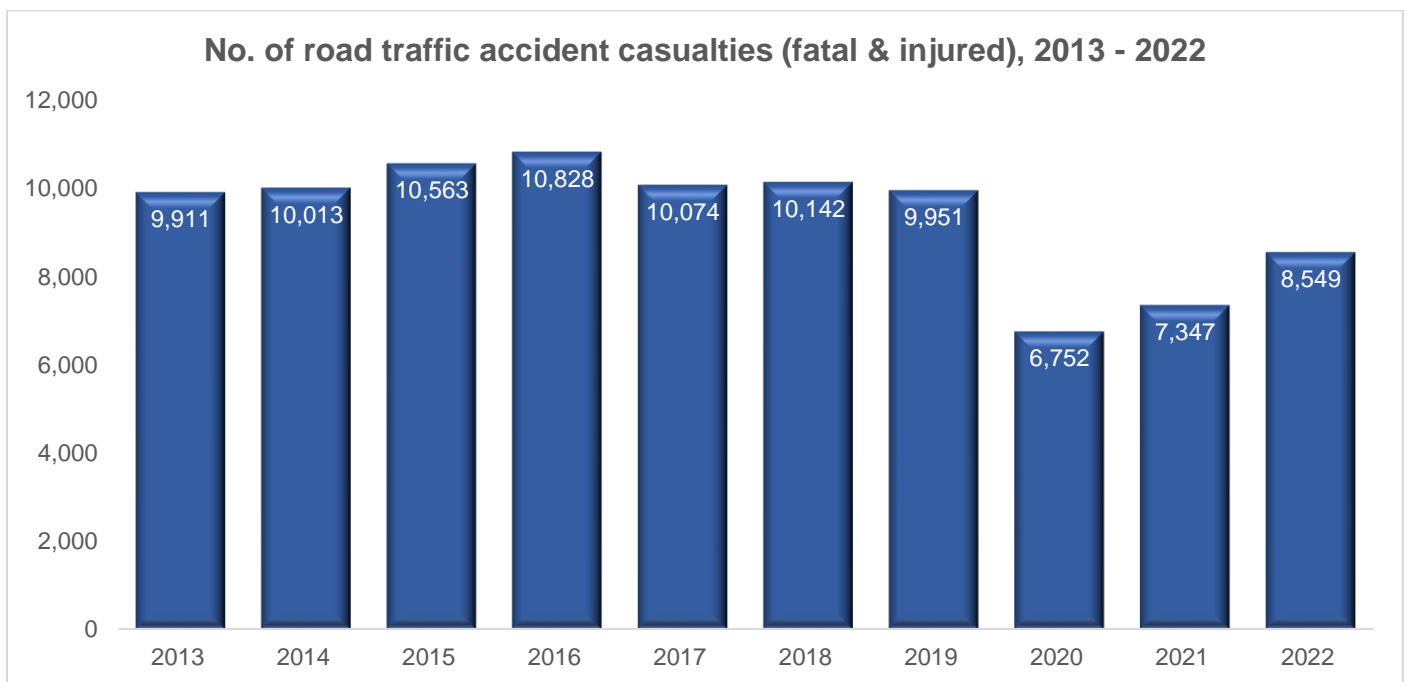
Year	Human Population [1]	Total Casualties	Casualties		Casualties per 100,000 Human Population		Motor Vehicle Population [2]	Casualties per 10,000 Vehicle Population	
			Fatalities	Injured	Fatalities	Injured		Fatalities	Injured
2013	5,399,200	9,911	160	9,751	3.0	180.6	970,136	1.6	100.5
2014	5,469,700	10,013	155	9,858	2.8	180.2	971,871	1.6	101.4
2015	5,535,000	10,563	151	10,412	2.7	188.1	963,759	1.6	108.0
2016	5,607,300	10,828	141	10,687	2.5	190.6	954,717	1.5	111.9
2017	5,612,300	10,074	121	9,953	2.2	177.3	953,097	1.3	104.4
2018	5,638,700	10,142	124	10,018	2.2	177.7	959,938	1.3	104.4
2019	5,703,600	9,951	118	9,833	2.1	172.4	965,547	1.2	101.8
2020	5,685,800	6,752	83	6,669	1.5	117.3	964,299	0.9	69.2
2021	5,453,600	7,347	107	7,240	2.0	132.8	982,459	1.1	73.7
2022	5,637,000	8,549	108	8,441	1.9	149.7	991,464	1.1	85.1

[1] Total population comprising Singapore residents & non-residents at mid-year. [Source: Singapore Department of Statistics]

[2] Number of motor vehicles as at mid-year. [Source: Land Transport Authority]

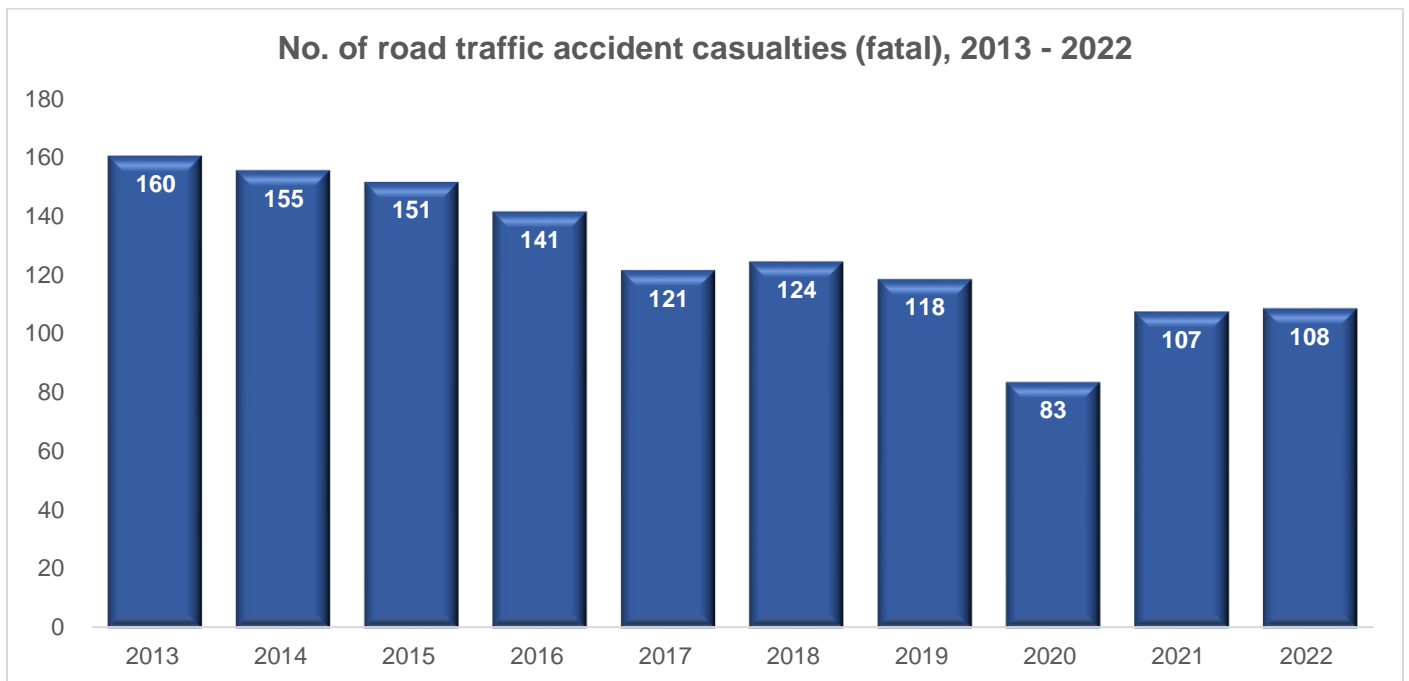
**Table 3A: No. of road traffic accident casualties (fatal & injured) by month, 2013 – 2022**

Year	Total	Jan	Feb	Mar	Apr	May	Jun	Jul	Aug	Sep	Oct	Nov	Dec
2013	9,911	877	789	815	842	823	767	825	869	838	879	811	776
2014	10,013	816	684	751	803	868	834	905	935	872	888	822	835
2015	10,563	839	842	970	826	898	843	904	884	811	887	870	989
2016	10,828	908	888	884	864	891	842	963	1037	852	927	930	842
2017	10,074	892	719	847	851	789	811	908	836	812	815	880	914
2018	10,142	898	759	871	829	804	862	831	871	804	862	945	806
2019	9,951	883	749	756	834	824	830	880	765	812	913	858	847
2020	6,752	803	595	626	349	306	429	557	523	583	634	606	741
2021	7,347	668	576	656	621	565	583	603	640	660	514	600	661
2022	8,549	716	531	577	670	723	669	794	736	737	745	785	866



**Table 3B: No. of road accident casualties (fatal) by month, 2013 – 2022**

Year	Total	Jan	Feb	Mar	Apr	May	Jun	Jul	Aug	Sep	Oct	Nov	Dec
2013	160	19	19	14	10	13	17	11	13	7	9	16	12
2014	155	15	18	12	13	20	11	12	9	17	11	7	10
2015	151	12	14	12	15	7	16	12	12	12	14	14	11
2016	141	13	8	10	13	11	11	16	12	8	15	11	13
2017	121	8	11	9	10	13	9	7	16	11	3	15	9
2018	124	10	12	6	12	9	11	11	9	9	13	8	14
2019	118	8	9	13	12	6	11	9	4	10	9	15	12
2020	83	11	9	11	11	2	7	3	10	4	5	6	4
2021	107	7	12	14	6	12	7	9	6	6	6	10	12
2022	108	4	6	11	13	5	6	10	9	15	14	3	12

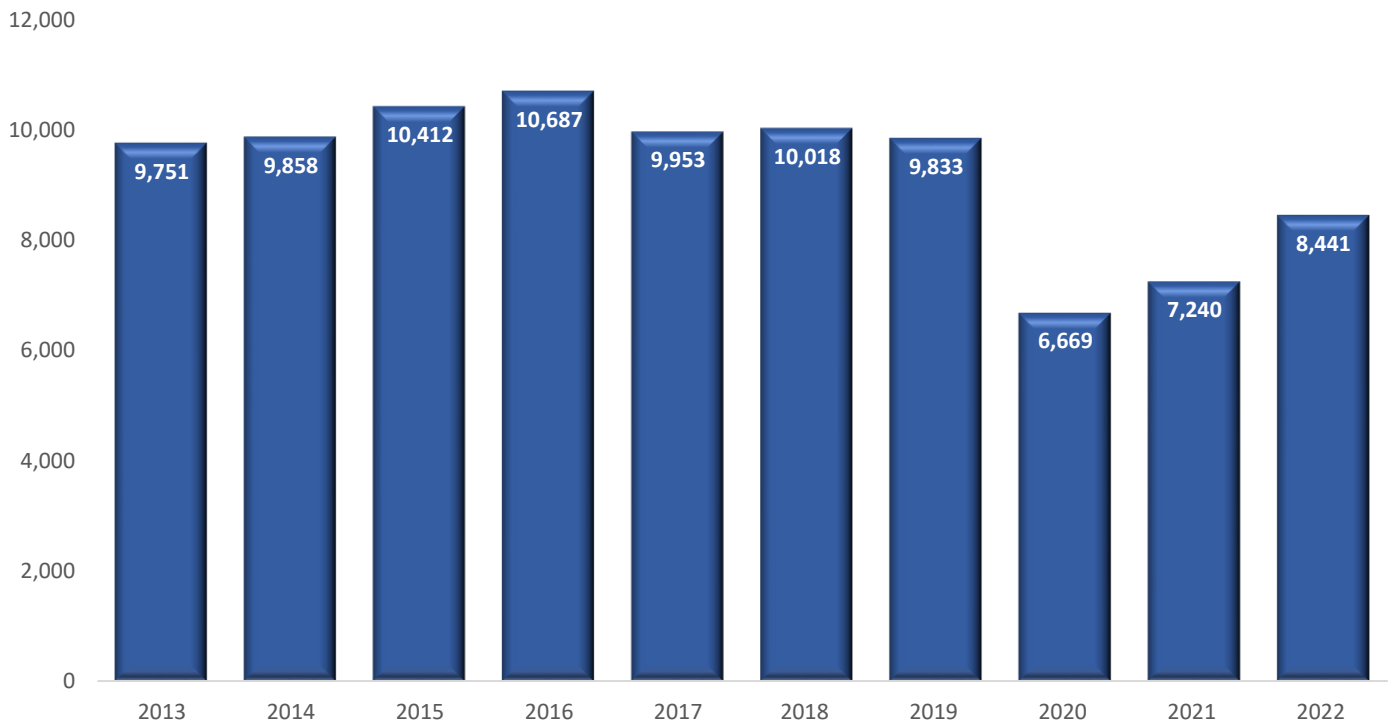




**Table 3C: No. of road accident casualties (injured) by month, 2013 – 2022**

Year	Total	Jan	Feb	Mar	Apr	May	Jun	Jul	Aug	Sep	Oct	Nov	Dec
2013	9,751	858	770	801	832	810	750	814	856	831	870	795	764
2014	9,858	801	666	739	790	848	823	893	926	855	877	815	825
2015	10,412	827	828	958	811	891	827	892	872	799	873	856	978
2016	10,687	895	880	874	851	880	831	947	1025	844	912	919	829
2017	9,953	884	708	838	841	776	802	901	820	801	812	865	905
2018	10,018	888	747	865	817	795	851	820	862	795	849	937	792
2019	9,833	875	740	743	822	818	819	871	761	802	904	843	835
2020	6,669	792	586	615	338	304	422	554	513	579	629	600	737
2021	7,240	661	564	642	615	553	576	594	634	654	508	590	649
2022	8,441	712	525	566	657	718	663	784	727	722	731	782	854

**No. of road traffic accident casualties (injured), 2013 - 2022**



**OFFICIAL (OPEN) / NON-SENSITIVE**

**Table 4A: No. of road traffic accident casualties (fatal & injured) by road user group, 2013 - 2022**

Year	Total	Pedestrian [3]	PMD User [4]	Cyclist/ Pillion [5]	Motorcyclist/ Pillion Rider	Motorcar Driver/ Passenger	Goods Van & Pick-Up Driver/ Passenger	Lorry, Tipper Truck & Trailer Driver/ Passenger	Bus Driver/ Passenger	Others
2013	9,911	1,032	Tracking of PMD statistics started from 2017 onwards	451	4,456	2,827	229	656	244	16
2014	10,013	928		518	4,708	2,698	195	584	342	40
2015	10,563	1,016		623	5,000	2,753	221	562	360	28
2016	10,828	1,112		614	5,164	2,706	236	543	415	38
2017	10,074	944	99	604	4,847	2,494	201	529	334	22
2018	10,142	916	163	508	4,900	2,547	183	548	350	27
2019	9,951	1,018	199	460	5,074	2,290	159	452	277	22
2020	6,752	660	51	570	3,430	1,450	165	246	168	12
2021	7,347	628	49	774	3,743	1,457	195	349	129	23
2022	8,549	692	53	735	4,276	1,955	188	386	241	23

**Table 4B: No. of road traffic accident casualties (fatal) by road user group, 2013 - 2022**

Year	Total	Pedestrian [3]	PMD User [4]	Cyclist/ Pillion [5]	Motorcyclist/ Pillion Rider	Motorcar Driver/ Passenger	Goods Van & Pick-Up Driver/ Passenger	Lorry, Tipper Truck & Trailer Driver/ Passenger	Bus Driver/ Passenger	Others
2013	160	43	Tracking of PMD statistics started from 2017 onwards	15	73	16	3	9	1	0
2014	155	45		15	74	12	2	6	0	1
2015	151	43		17	72	7	2	8	2	0
2016	141	47		20	62	8	1	3	0	0
2017	121	41	4	15	44	9	2	5	1	0
2018	124	39	1	9	61	10	3	1	0	0
2019	118	39	2	8	64	1	0	3	1	0
2020	83	18	0	7	49	4	2	3	0	0
2021	107	23	3	11	50	12	3	4	1	0
2022	108	33	0	11	47	6	1	7	3	0

**Table 4C: No. of road traffic accident casualties (injured) by road user group, 2013 - 2022**

Year	Total	Pedestrian [3]	PMD User [4]	Cyclist/ Pillion [5]	Motorcyclist/ Pillion Rider	Motorcar Driver/ Passenger	Goods Van & Pick-Up Driver/ Passenger	Lorry, Tipper Truck & Trailer Driver/ Passenger	Bus Driver/ Passenger	Others
2013	9,751	989	Tracking of PMD statistics started from 2017 onwards	436	4,383	2,811	226	647	243	16
2014	9,858	883		503	4,634	2,686	193	578	342	39
2015	10,412	973		606	4,928	2,746	219	554	358	28
2016	10,687	1,065		594	5,102	2,698	235	540	415	38
2017	9,953	903	95	589	4,803	2,485	199	524	333	22
2018	10,018	877	162	499	4,839	2,537	180	547	350	27
2019	9,833	979	197	452	5,010	2,289	159	449	276	22
2020	6,669	642	51	563	3,381	1,446	163	243	168	12
2021	7,240	605	46	763	3,693	1,445	192	345	128	23
2022	8,441	659	53	724	4,229	1,949	187	379	238	23

[3] A pedestrian refers to a person on-foot.

[4] Tracking of PMD statistics started from 2017 onwards.

[5] Number of cyclists include Power Assisted Bicycle (PAB) users.

# OFFICIAL (OPEN) / NON-SENSITIVE

Table 5: Pedestrian [1] casualties in road traffic accidents by age group, 2013 – 2022

Age	2013			2014			2015			2016			2017			2018			2019			2020			2021			2022		
	Total	Fatalities	Injured	Total	Fatalities	Injured	Total	Fatalities	Injured	Total	Fatalities	Injured	Total	Fatalities	Injured	Total	Fatalities	Injured	Total	Fatalities	Injured	Total	Fatalities	Injured	Total	Fatalities	Injured	Total	Fatalities	Injured
Under 18	122	1	121	133	0	133	129	1	128	136	0	136	101	1	100	111	2	109	101	0	101	61	1	60	55	0	55	73	2	71
18-19	27	0	27	27	1	26	28	1	27	22	0	22	21	1	20	15	0	15	21	0	21	13	0	13	15	0	15	11	0	11
20-24	106	3	103	94	2	92	102	1	101	94	1	93	89	0	89	60	0	60	79	1	78	36	0	36	40	0	40	44	0	44
25-29	101	2	99	95	3	92	115	1	114	127	2	125	93	2	91	100	1	99	92	2	90	57	1	56	59	1	58	45	1	44
30-34	111	3	108	99	3	96	93	2	91	113	3	110	99	2	97	93	1	92	93	0	93	61	0	61	65	1	64	60	0	60
35-39	76	2	74	74	2	72	66	3	63	83	4	79	61	2	59	65	1	64	78	0	78	36	0	36	43	0	43	45	0	45
40-44	83	5	78	61	2	59	68	1	67	57	0	57	60	3	57	63	2	61	61	3	58	36	0	36	28	1	27	50	2	48
45-49	57	0	57	46	1	45	57	1	56	69	3	66	42	2	40	55	3	52	58	1	57	45	0	45	47	3	44	47	2	45
50-54	54	4	50	57	2	55	70	4	66	60	5	55	52	3	49	57	1	56	53	4	49	49	0	49	40	2	38	43	2	41
55-59	67	6	61	47	3	44	59	5	54	78	1	77	61	1	60	54	4	50	58	1	57	29	1	28	28	0	28	31	1	30
60 & above	228	17	211	195	26	169	229	23	206	273	28	245	265	24	241	243	24	219	324	27	297	237	15	222	208	15	193	243	23	220
<b>Total</b>	<b>1,032</b>	<b>43</b>	<b>989</b>	<b>928</b>	<b>45</b>	<b>883</b>	<b>1,016</b>	<b>43</b>	<b>973</b>	<b>1,112</b>	<b>47</b>	<b>1,065</b>	<b>944</b>	<b>41</b>	<b>903</b>	<b>916</b>	<b>39</b>	<b>877</b>	<b>1,018</b>	<b>39</b>	<b>979</b>	<b>660</b>	<b>18</b>	<b>642</b>	<b>628</b>	<b>23</b>	<b>605</b>	<b>692</b>	<b>33</b>	<b>659</b>

[1] A pedestrian refers to a person on-foot.

Table 6: PMD user [1] casualties in road traffic accidents by age group, 2017 – 2022

Age	2013			2014			2015			2016			2017			2018			2019			2020			2021			2022		
	Total	Fatalities	Injured	Total	Fatalities	Injured	Total	Fatalities	Injured	Total	Fatalities	Injured	Total	Fatalities	Injured	Total	Fatalities	Injured	Total	Fatalities	Injured	Total	Fatalities	Injured	Total	Fatalities	Injured	Total	Fatalities	Injured
Under 18													19	0	19	37	0	37	34	0	34	14	0	14	3	1	2	8	0	8
18-19													4	0	4	11	0	11	13	0	13	3	0	3	0	0	0	3	0	3
20-24													13	0	13	9	0	9	22	0	22	5	0	5	7	0	7	3	0	3
25-29													10	0	10	16	0	16	26	0	26	5	0	5	2	0	2	0	0	0
30-34													11	0	11	21	0	21	14	1	13	8	0	8	2	0	2	3	0	3
35-39													10	1	9	12	0	12	20	1	19	4	0	4	4	0	4	2	0	2
40-44													6	0	6	15	0	15	21	0	21	3	0	3	5	0	5	1	0	1
45-49													7	0	7	9	0	9	7	0	7	0	0	0	3	0	3	1	0	1
50-54													4	1	3	7	0	7	11	0	11	2	0	2	1	0	1	5	0	5
55-59													3	0	3	10	0	10	6	0	6	1	0	1	1	0	1	3	0	3
60 & above													12	2	10	16	1	15	25	0	25	6	0	6	21	2	19	24	0	24
<b>Total</b>													<b>99</b>	<b>4</b>	<b>95</b>	<b>163</b>	<b>1</b>	<b>162</b>	<b>199</b>	<b>2</b>	<b>197</b>	<b>51</b>	<b>0</b>	<b>51</b>	<b>49</b>	<b>3</b>	<b>46</b>	<b>53</b>	<b>0</b>	<b>53</b>

Tracking of PMD statistics started from 2017 onwards

Table 7: Motorcyclist casualties in road traffic accidents by age group, 2013 – 2022

Age	2013			2014			2015			2016			2017			2018			2019			2020			2021			2022		
	Total	Fatalities	Injured	Total	Fatalities	Injured	Total	Fatalities	Injured	Total	Fatalities	Injured	Total	Fatalities	Injured	Total	Fatalities	Injured	Total	Fatalities	Injured	Total	Fatalities	Injured	Total	Fatalities	Injured	Total	Fatalities	Injured
Under 18	0	0	0	0	0	0	1	0	1	2	0	2	0	0	0	0	0	1	0	1	0	0	0	0	0	0	0	0	0	0
18-19	68	4	64	61	3	58	59	2	57	77	2	75	78	1	77	82	0	82	119	1	118	72	4	68	67	2	65	146	0	146
20-24	824	9	815	852	16	836	836	4	832	829	7	822	866	8	858	875	8	867	872	8	864	590	8	582	633	5	628	732	9	723
25-29	808	9	799	922	15	907	929	11	918	1,017	11	1,006	948	8	940	954	8	946	1,037	11	1,026	627	9	618	685	9	676	737	10	727
30-34	555	15	540	560	11	549	641	10	631	657	5	652	636	8	628	635	13	622	717	9	708	470	7	463	499	6	493	596	7	589
35-39	373	6	367	402	11	391	437	7	430	473	6	467	400	1	399	466	3	463	441	4	437	342	5	337	375	4	371	385	4	381
40-44	289	4	285	371	3	368	324	9	315	344	2	342	289	0	289	320	11	309	298	3	295	238	2	236	268	3	265	320	3	317
45-49	260	8	252	238	2	236	274	4	270	274	3	271	261	3	258	237	2	235	285	5	280	203	0	203	229	3	226	238	4	234
50-54	245	2	243	241	3	238	295	4	291	274	13	261	277	2	275	216	5	211	211	4	207	148	5	143	149	3	146	201	1	200
55-59	221	5	216	213	3	210	243	5	238	211	1	210	179	4	175	210	4	206	162	4	158	146	0	146	190	3	187	161	2	159
60 & above	329	9	320	360	4	356	338	10	328	403	9	394	351	5	346	380	4	376	373	9	364	275	4	271	293	7	286	319	7	312
Unknown	1	0	1	0	0	0	0	0	0	0	0	0	0	0	0	0	0	0	0	0	0	0	0	0	0	0	1	0	1	
<b>Total</b>	<b>3,973</b>	<b>71</b>	<b>3,902</b>	<b>4,220</b>	<b>71</b>	<b>4,149</b>	<b>4,377</b>	<b>66</b>	<b>4,311</b>	<b>4,561</b>	<b>59</b>	<b>4,502</b>	<b>4,285</b>	<b>40</b>	<b>4,245</b>	<b>4,375</b>	<b>58</b>	<b>4,317</b>	<b>4,516</b>	<b>58</b>	<b>4,458</b>	<b>3,111</b>	<b>44</b>	<b>3,067</b>	<b>3,388</b>	<b>45</b>	<b>3,343</b>	<b>3,836</b>	<b>47</b>	<b>3,789</b>

Table 8: Motorcar driver casualties in road traffic accidents by age group, 2013 – 2022

Age	2013			2014			2015			2016			2017			2018			2019			2020			2021			2022		
	Total	Fatalities	Injured	Total	Fatalities	Injured	Total	Fatalities	Injured	Total	Fatalities	Injured	Total	Fatalities	Injured	Total	Fatalities	Injured	Total	Fatalities	Injured	Total	Fatalities	Injured	Total	Fatalities	Injured	Total	Fatalities	Injured
Under 18	0	0	0	0	0	0	0	0	0	0	0	0	0	0	0	0	0	1	0	1	0	0	0	0	0	0	0	0	0	0
18-19	8	0	8	1	0	1	4	0	4	8	0	8	2	0	2	5	0	5	4	0	4	3	0	3	4	0	4	7	0	7
20-24	113	2	111	74	0	74	64	1	63	65	2	63	48	1	47	57	0	57	43	0	43	35	1	34	38	0	38	47	0	47
25-29	155	2	153	150	0	150	123	1	122	150	1	149	104	2	102	124	1	123	78	0	78	64	0	64	64	1	63	78	0	78
30-34	200	4	196	177	1	176	146	0	146	149	0	149	119	1	118	117	1	116	108	0	108	84	2	82	97	2	95	115	1	114
35-39	214	0	214	209	0	209	151	1	150	195	0	195	153	1	152	146	1	145	136	0	136	70	0	70	67	0	67	117	0	117
40-44	174	0	174	175	0	175	198	0	198	181	1	180	147	0	147	137	0	137	143	0	143	85	0	85	84	0	84	136	0	136
45-49	235	2	233	174	0	174	185	1	184	187	0	187	158	0	158	155	0	155	142	0	142	81	0	81	89	0	89	107	0	107
50-54	234	0	234	200	0	200	214	0	214	186	0	186	185	0	185	148	1	147	146	0	146	82	0	82	95	1	94	125	2	123
55-59	231	1	230	200	0	200	189	0	189	156	0	156	176	0	176	168	0	168	157	0	157	86	0	86	84					

**OFFICIAL (OPEN) / NON-SENSITIVE**

**Table 9A: Vehicles involved in road traffic accidents (fatal & injury) by type, 2013 – 2022**

Year	Total	Bicycle/ Power Assisted Bicycle	Motorcycle	Motor Car	Goods Van/ Pick-Up	Lorry, Tipper Truck/ Trailer	Bus	Others
2013	13,906	466	4,231	6,637	630	1,361	499	82
2014	14,322	530	4,506	6,723	576	1,384	505	98
2015	14,982	643	4,694	6,930	617	1,413	568	117
2016	15,369	633	4,913	7,172	657	1,321	572	101
2017	14,168	605	4,619	6,680	539	1,128	494	103
2018	14,062	513	4,748	6,423	549	1,220	510	99
2019	14,133	473	4,860	6,643	552	1,051	468	86
2020	9,852	581	3,364	4,374	499	698	279	57
2021	10,964	812	3,636	4,716	577	869	257	97
2022	12,435	764	4,140	5,442	568	1,045	382	94

**Table 9B: Vehicles involved in road traffic accidents (fatal) by type, 2013 – 2022**

Year	Total	Bicycle/ Power Assisted Bicycle	Motorcycle	Motor Car	Goods Van/ Pick-Up	Lorry, Tipper Truck/ Trailer	Bus	Others
2013	257	14	86	75	10	42	22	8
2014	238	15	81	54	10	54	14	10
2015	250	17	78	73	11	51	13	7
2016	227	21	67	62	11	51	12	3
2017	195	17	56	56	9	37	14	6
2018	207	10	77	61	11	31	16	1
2019	196	9	71	57	8	30	15	6
2020	134	7	54	42	8	15	6	2
2021	172	12	59	40	14	31	9	7
2022	165	11	53	40	13	31	14	3

**Table 9C: Vehicles involved in road traffic accidents (injury) by type, 2013 – 2022**

Year	Total	Bicycle/ Power Assisted Bicycle	Motorcycle	Motor Car	Goods Van/ Pick-Up	Lorry, Tipper Truck/ Trailer	Bus	Others
2013	13,649	452	4,145	6,562	620	1,319	477	74
2014	14,084	515	4,425	6,669	566	1,330	491	88
2015	14,732	626	4,616	6,857	606	1,362	555	110
2016	15,142	612	4,846	7,110	646	1,270	560	98
2017	13,973	588	4,563	6,624	530	1,091	480	97
2018	13,855	503	4,671	6,362	538	1,189	494	98
2019	13,937	464	4,789	6,586	544	1,021	453	80
2020	9,718	574	3,310	4,332	491	683	273	55
2021	10,792	800	3,577	4,676	563	838	248	90
2022	12,270	753	4,087	5,402	555	1,014	368	91



**OFFICIAL (OPEN) / NON-SENSITIVE**

**Table 11: Qualified driving licence holders by class of licence, 2013 – 2022 (figures as at mid-year)**

Year (Mid- Year)	All Classes	Class 2	Class 2A	Class 2B	Class 3	Class 3A	Class 3C	Class 3CA	Class 4	Class 4A	Class 5
2013	2,809,470	142,135	201,856	463,928	1,684,621	93,939	0	0	142,119	14,820	66,052
2014	2,889,579	143,526	203,750	478,913	1,730,769	107,203	0	0	143,818	15,805	65,795
2015	2,975,949	144,025	204,937	495,532	1,778,945	122,201	2,251	7	145,782	17,257	65,012
2016	3,033,828	142,892	204,184	505,624	1,797,317	138,299	20,943	83	143,852	17,990	62,644
2017	3,006,441	132,773	195,280	502,056	1,763,092	154,228	36,577	146	143,635	18,127	60,527
2018	3,062,113	132,491	196,024	510,675	1,778,763	172,298	51,815	208	142,360	19,041	58,438
2019	3,117,890	132,054	196,753	520,884	1,789,826	191,923	69,974	317	140,965	19,255	55,939
2020	3,143,544	130,647	196,004	526,017	1,788,003	207,000	83,788	401	138,920	19,102	53,662
2021	3,175,918	129,652	196,258	529,049	1,794,034	231,763	89,606	484	135,720	18,631	50,721
2022	3,205,200	128,314	196,082	535,017	1,795,715	253,777	97,026	588	132,545	18,056	48,080

**Table 12: Total number of persons holding qualified driving licence, 2013 – 2022 (figures as at mid-year)**

Year	2013	2014	2015	2016	2017	2018	2019	2020	2021	2022
<b>Total no. of persons</b>	1,816,777	1,875,460	1,939,782	1,983,229	1,978,816	2,019,193	2,060,153	2,081,431	2,111,787	2,139,026

Note:

(1) A person may hold more than one class of qualified driving licence.

(2) Types of class of qualified driving licences and the types of vehicles which a qualified driving licence holder is allowed to operate:

- (a) Class 2B: Motorcycle with cylinder capacity not exceeding 200cc and electric motorcycles with a power rating not exceeding 15kW
- (b) Class 2A: Motorcycle with cylinder capacity between 201cc and 400cc, and electric motorcycles with a power rating exceeding 15kW and not exceeding 25kW.
- (c) Class 2: Motorcycle with cylinder capacity exceeding 400cc and electric motorcycles with a power rating exceeding 25kW
- (d) Class 3: (i) Motor tractors and other motor vehicles, the weight of which unladen does not exceed 2,500 kilograms; and (ii) Motor cars constructed solely and adapted to carry not more than 7 passengers (exclusive of the driver) and the weight of which unladen does not exceed 3,000 kilograms
- (e) Class 3A: (iii) ambulances, and medical transport vehicles, constructed and adapted to carry not more than 7 passengers (exclusive of the driver) and the weight of which unladen does not exceed 3,000 kilograms
- (f) Class 3A: Motor vehicles which consist of any Class 3 vehicle which can be driven without the use of a clutch pedal
- (g) Class 3C: Motor cars constructed solely and adapted to carry not more than 7 passengers (exclusive of the driver) and the weight of which unladen does not exceed 3,000 kilograms. Issued only to work permit and S-Pass holders
- (h) Class 3CA: Motor vehicles which consist of any Class 3C vehicle which can be driven without the use of a clutch pedal. Issued only to work permit and S-Pass holders
- (i) Class 4A: Heavy motor cars which are omnibus
- (j) Class 4: Heavy motor car and motor tractor the weight of which unladen exceeds 2,500 kilograms
- (k) Class 5: Motor vehicle which is not constructed to carry any load (other than water, fuel, accumulators and other equipment and materials used for the purpose of propulsion, loose tools and loose equipment) and the weight of which unladen exceeds 7,250 kilograms (includes light and heavy locomotives)